

8/21/13

NW

NE

S

← radial

13.8

8.9

16.8

axial

50.8

7.1

62.9

" adj S hp

48.6

9.6

24.3

" 1/4 bolts

48.7

9.5

13.5

+ S hp

" after tb off

{ 24

22

21

radial + becker +  
adjusted cw's

final

{ 14

15

9

(fixed 17+18!)

+ adjusted hp's

~~axial~~ +

radial

PUT = 0.4"

8/19/13

counterweight adjustments

21. DONE. MOVED OUT

19. N. 2W. WT

20. ~~N. 2W. WT~~ WT. 4W. N

16. N. 2W. WT

50g

22. N. 3W. WT

18. DONE, UNCHANGED

CANT CHANGE

17. DONE, UNCHANGED

too tight

+3w (arm 3"-96)

+2w (arm 4"-34)

wire + tape

~~21. DONE. MOVED OUT~~

15. DONE. MOVED OUT

16. ~~DONE. MOVED OUT~~ N. 2W. WT

14. DONE. MOVED OUT

washers 2 = 25g

23. DONE. MOVED OUT

12. 2W. ARTWORK (tape + wire)

13. DONE. MOVED OUT

15. DONE. MOVED OUT

11. DONE. MOVED OUT

9. DONE. MOVED OUT

10. DONE. MOVED OUT

8. DONE. MOVED OUT + NIP

7. DONE. MOVED OUT

6. DONE. MOVED OUT

5. DONE. MOVED OUT

3. DONE. MOVED OUT

2. DONE. MOVED OUT

4. DONE. MOVED OUT

1. DONE. MOVED OUT

26. DONE. MOVED OUT

24. DONE. MOVED OUT

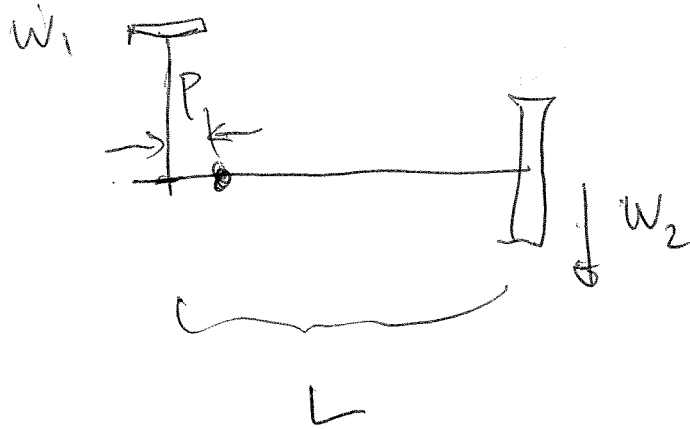
27. DONE. MOVED OUT

25. DONE. MOVED OUT



MR. BILLY →

pivot pt 0.5 in p  
lever arm 4.38 L



$$W_2 (L-p) = W_1 p$$

$$W_2 = \frac{W_1 p}{L-p}$$